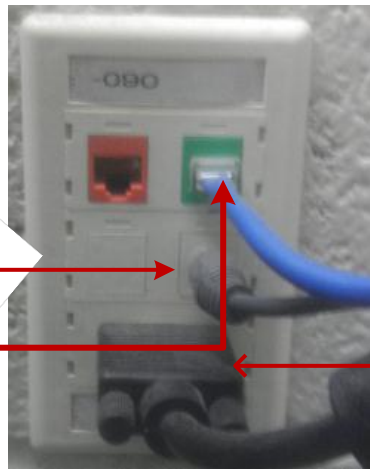


7. Network Cable goes from Green Port on Wall Plate to USB Extender (plugs into USB port on the computer)

6. Audio Cable (White Cable in Picture) goes from Green Port on Back of Computer to the Wall Plate with the Green Network Drop.



Wall Plate

5. VGA CABLE in 1st VGA Port on A/V Box goes to the VGA Port on the Wall Plate.

A/V Box



4. VGA CABLE from Output 2 on Kramer Box goes into 2nd VGA Slot on the A/V Box

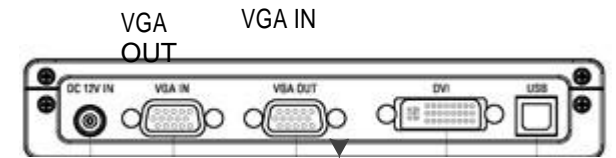
Back of the monitor



Power Adapter

Output 1

Output 2



Back of the document camera

2. VGA CABLE from Output 1 on Kramer Box goes to Back of Monitor/ Computer Screen

Back of the computer



Kramer Box

1. VGA CABLE From Input on Kramer Box goes into the 1st VGA Port on the Document Camera



Document Camera

3. VGA CABLE from 2nd VGA Slot on Document Camera goes into the Rear of Computer.