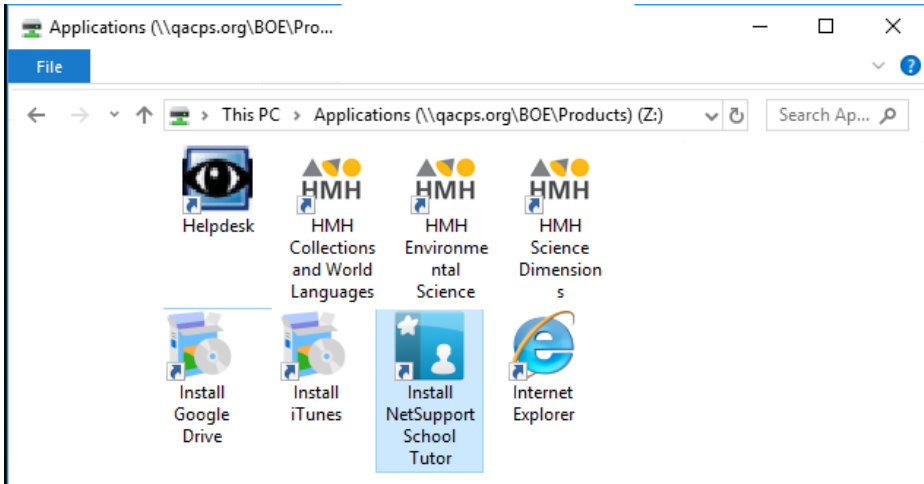
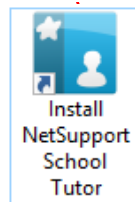


HOW TO INSTALL NETSUPPORT SCHOOL TUTOR

1) Log into Active Directory and open the Applications window or Z: drive



2) Look for this icon and double click it to open.



3) This window will open



If this is the first time you are installing NetSupport School Tutor on your computer, select **“TEACHER INSTALL”**

If you are a lab instructor and need to reinstall on your computer select **“LAB INSTALL”**

If you have previously installed NetSupport School Tutor on your computer, select **“TEACHER SETTINGS”**

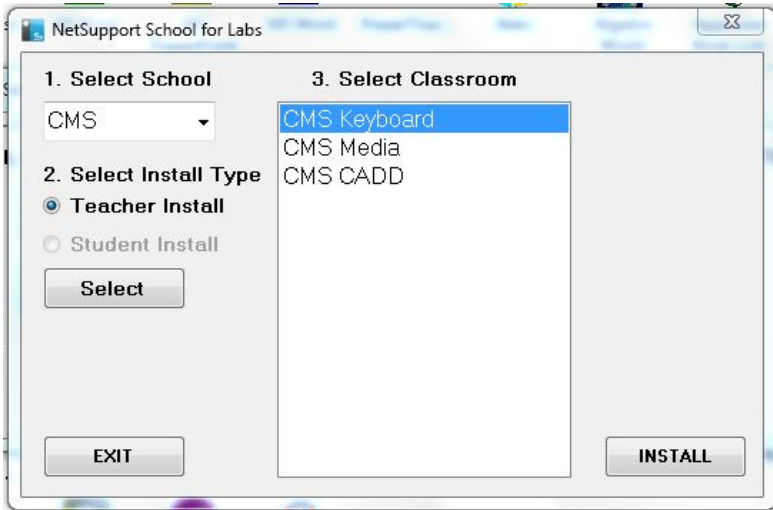
If you are a lab instructor and need to update your teacher or student computers settings select **“LAB SETTINGS”**

If you have selected **“TEACHER INSTALL”** or **“TEACHER SETTINGS”** please **STOP** here.

If you have selected **“LAB INSTALL”** or **“LAB SETTINGS”** please **CONTINUE**.

HOW TO INSTALL / UPDATE NETSUPPORT IN A COMPUTER LAB

If you selected “**LAB INSTALL**” button from the main window, the following window will open.



To start the installation process:

FIRST select your schools initials from the drop down menu.

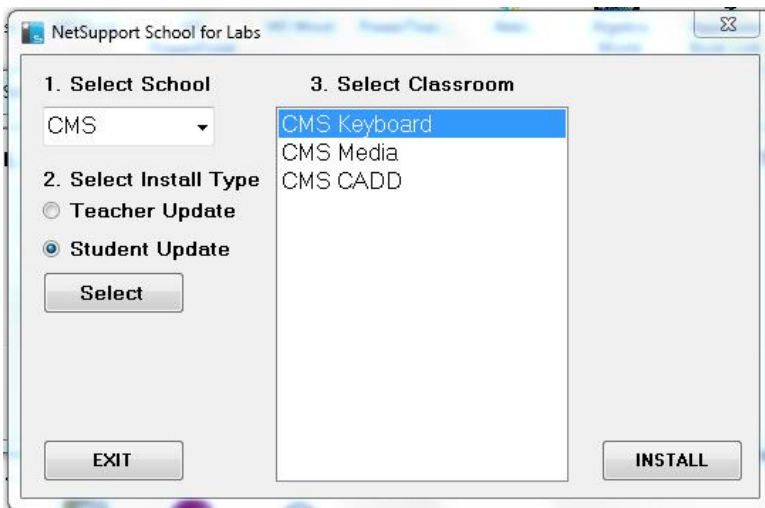
SECOND select the “**TEACHER INSTALL**” radio button.

THIRD select the “**SELECT**” button.

FOURTH select your classroom from the menu on the right.

FIFTH select the “**INSTALL BUTTON**” in the lower right corner.

If you selected “**LAB SETTINGS**” button from the main window, the following window will open



To start the update process:

FIRST select your schools initials from the drop down menu.

SECOND select the “**TEACHER UPDATE**” or “**STUDENT UPDATE**” radio button.

THIRD select the “**SELECT**” button.

FOURTH select your classroom from the menu on the right.

FIFTH select the “**INSTALL BUTTON**” in the lower right corner.