




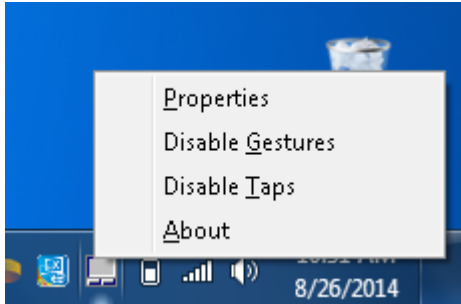
# HP ELITEBOOK HANDOUTS

## HOW TO GET TO THE TOUCHPAD SETTINGS

1. Click the  touchpad icon from the system tray



2. Choose/Click Properties from the popup menu

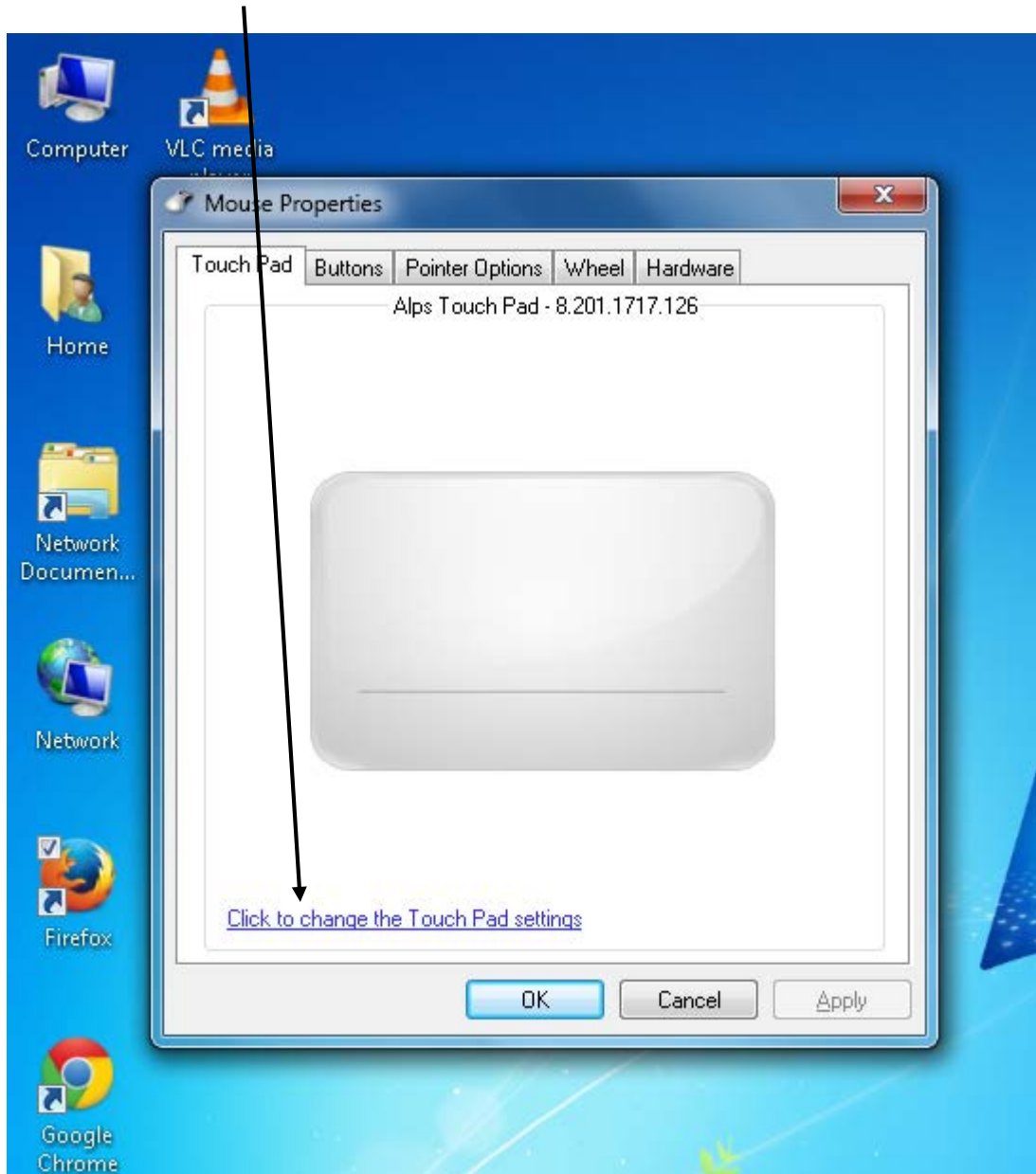




# HP ELITEBOOK HANDOUTS

## HOW TO GET TO THE TOUCHPAD SETTINGS

3. Click the link "Click to change the Touch Pad settings"





# HP ELITEBOOK HANDOUTS

## HOW TO GET TO THE TOUCHPAD SETTINGS

4. This screen will pop up showing you all the touchpad settings you can change

