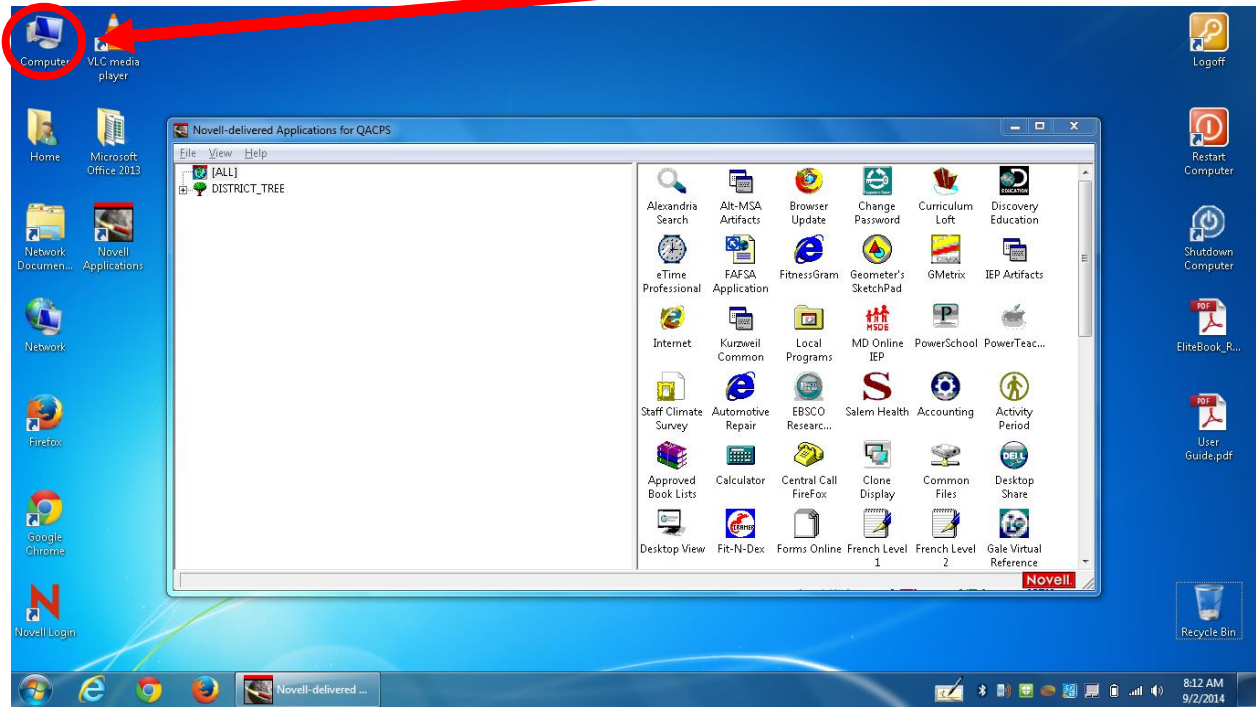
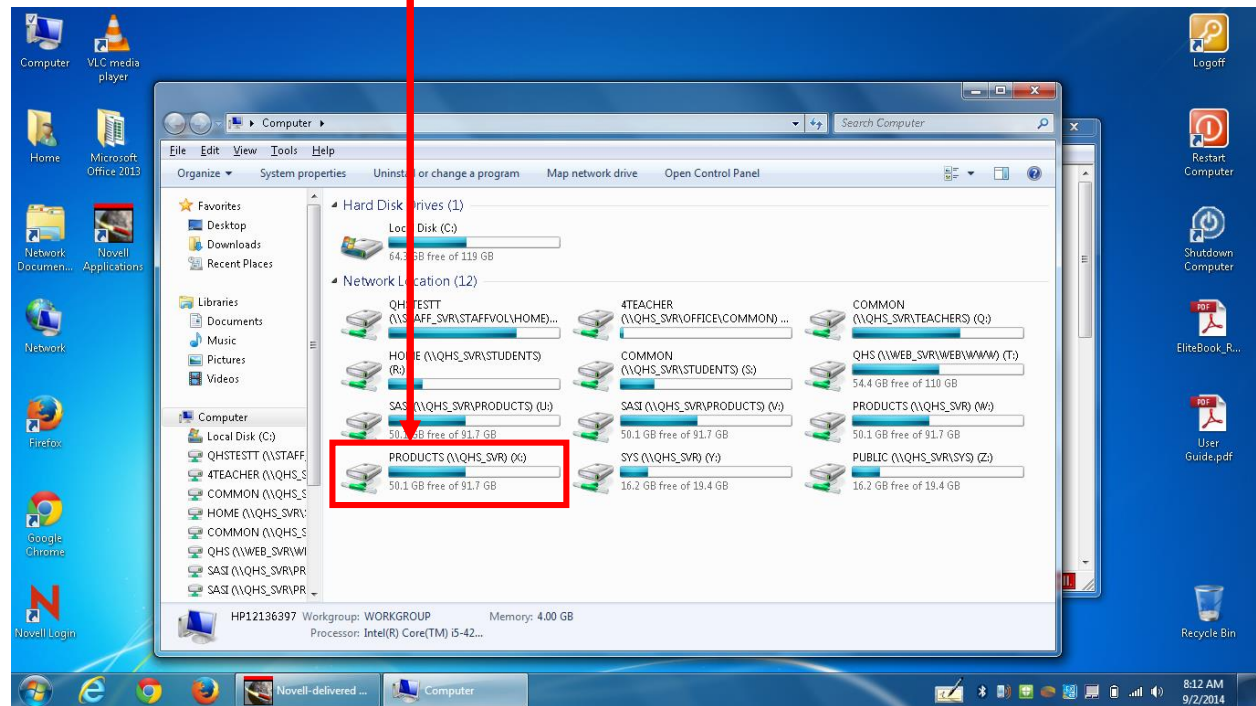


How to get to Printer Installation Documentation

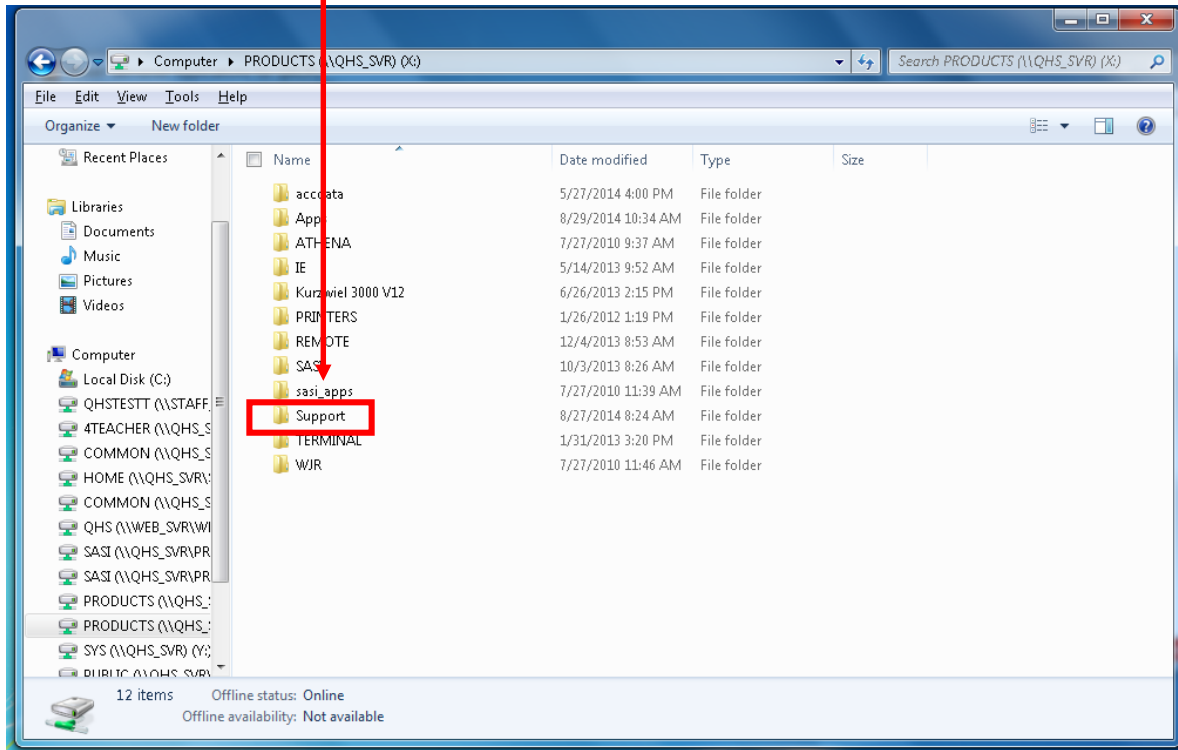
Step 1: Once you log into Novell, go to and open "COMPUTER" on desktop



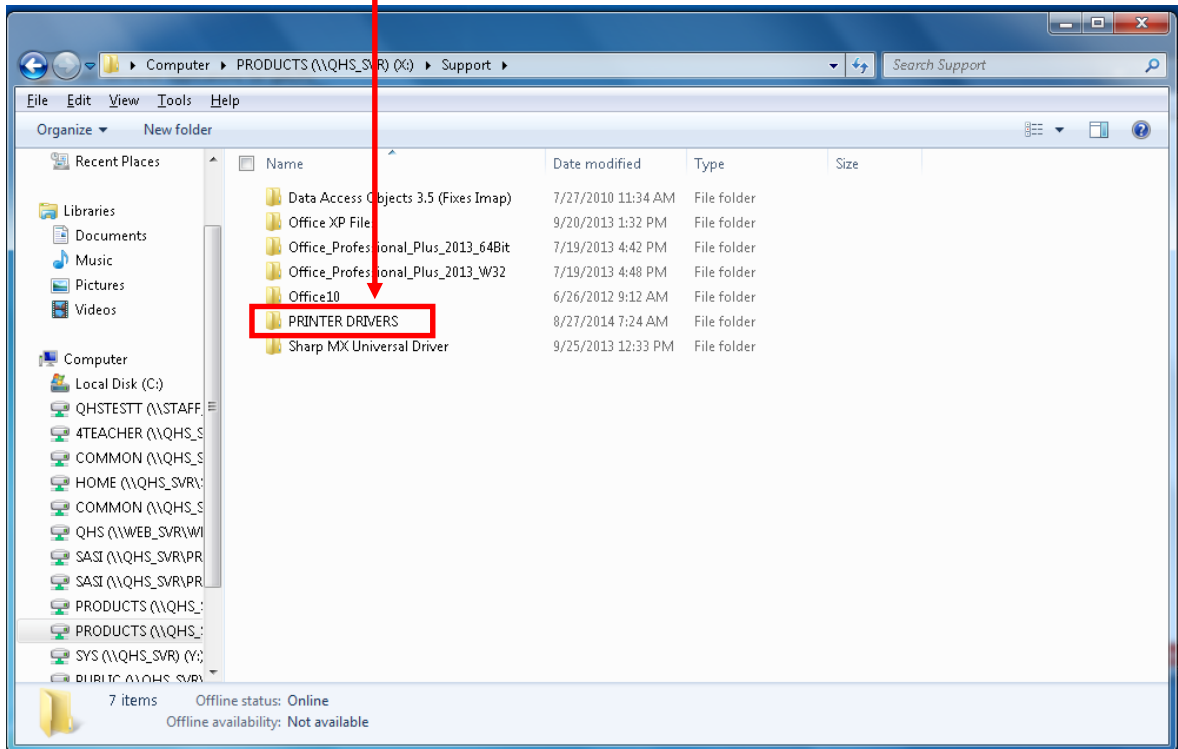
Step 2: Locate and open "PRODUCTS (X:)"



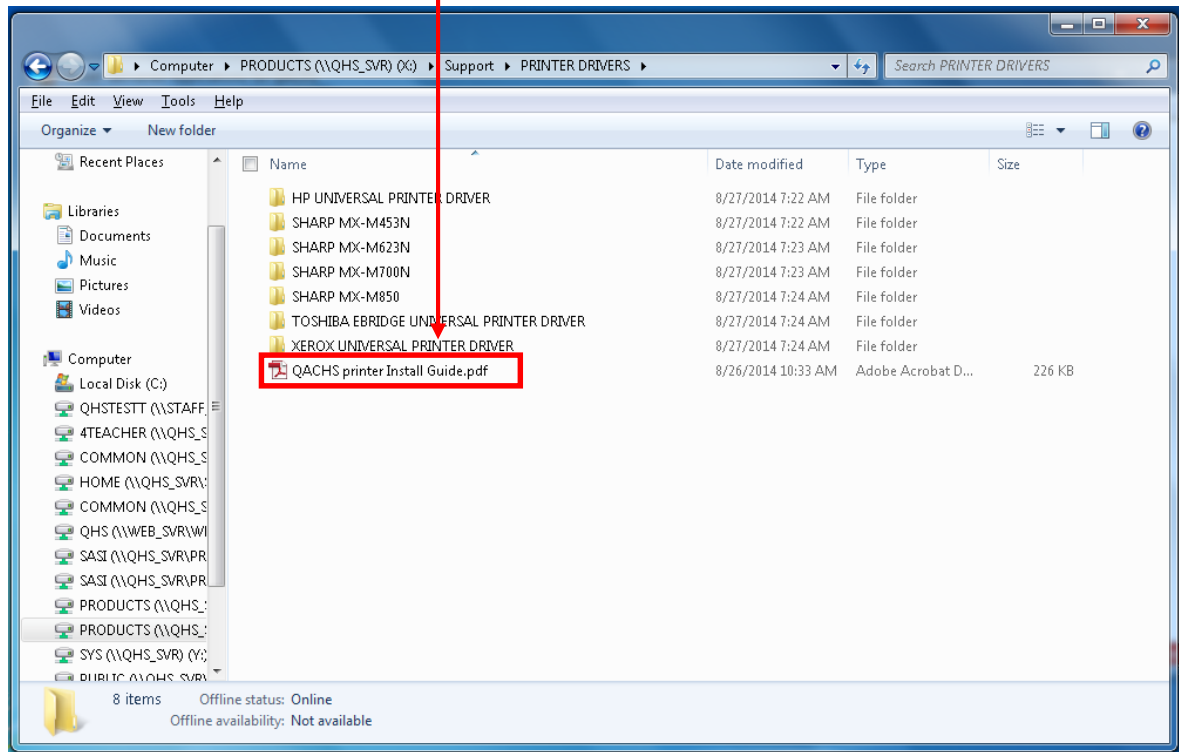
Step 3: Locate and open "SUPPORT" Folder



Step 4: Locate and open "PRINTER DRIVERS" Folder



Step 5: Locate and open file “{School Initials} printer Install Guide.pdf”



Step 6: In this PDF you will find the following:

- 1) IP ADDRESS TABLE:** This table has the IP Addresses for all the printers you can print to in the school. Next to each printer there is a link called “INSTALL INSTRUCTIONS”. This link will take you to the installation instruction for that specific printer.
- 2) INSTALLATION INSTRUCTIONS:** Below the IP Address table are the installation instructions for all the different types of printers for the school. Follow the instructions for the specific type of printer you want to install for successful installation.
- 3) LINKS TO ALL PRINTER INSTALLATION GUIDE:** If you need instructions for a printer not listed in your schools installation guide, these links will take you to instructions to all the different printer types.